



User Guide

Delete Job
V21.1.0200

Copyright © 2021 by Electronics for Imaging, Inc. All Rights Reserved.

EFI PrintStream | V21.1.0200 Delete Job User Guide

This publication is protected by copyright, and all rights are reserved. No part of it may be reproduced or transmitted in any form or by any means for any purpose without express prior written consent from Electronics for Imaging, Inc. Information in this document is subject to change without notice and does not represent a commitment on the part of Electronics for Imaging, Inc.

Patents

This product may be covered by one or more of the following U.S. Patents: 4,716,978, 4,828,056, 4,917,488, 4,941,038, 5,109,241, 5,170,182, 5,212,546, 5,260,878, 5,276,490, 5,278,599, 5,335,040, 5,343,311, 5,398,107, 5,424,754, 5,442,429, 5,459,560, 5,467,446, 5,506,946, 5,517,334, 5,537,516, 5,543,940, 5,553,200, 5,563,689, 5,565,960, 5,583,623, 5,596,416, 5,615,314, 5,619,624, 5,625,712, 5,640,228, 5,666,436, 5,745,657, 5,760,913, 5,799,232, 5,818,645, 5,835,788, 5,859,711, 5,867,179, 5,940,186, 5,959,867, 5,970,174, 5,982,937, 5,995,724, 6,002,795, 6,025,922, 6,035,103, 6,041,200, 6,065,041, 6,112,665, 6,116,707, 6,122,407, 6,134,018, 6,141,120, 6,166,821, 6,173,286, 6,185,335, 6,201,614, 6,215,562, 6,219,155, 6,219,659, 6,222,641, 6,224,048, 6,225,974, 6,226,419, 6,238,105, 6,239,895, 6,256,108, 6,269,190, 6,271,937, 6,278,901, 6,279,009, 6,289,122, 6,292,270, 6,299,063, 6,310,697, 6,321,133, 6,327,047, 6,327,050, 6,327,052, 6,330,071, 6,330,363, 6,331,899, 6,340,975, 6,341,017, 6,341,018, 6,341,307, 6,347,256, 6,348,978, 6,356,359, 6,366,918, 6,369,895, 6,381,036, 6,400,443, 6,429,949, 6,449,393, 6,476,927, 6,490,696, 6,501,565, 6,519,053, 6,539,323, 6,543,871, 6,546,364, 6,549,294, 6,549,300, 6,550,991, 6,552,815, 6,559,958, 6,572,293, 6,590,676, 6,606,165, 6,633,396, 6,636,326, 6,643,317, 6,647,149, 6,657,741, 6,662,199, 6,678,068, 6,707,563, 6,741,262, 6,748,471, 6,753,845, 6,757,436, 6,757,440, 6,778,700, 6,781,596, 6,816,276, 6,825,943, 6,832,865, 6,836,342, RE33,973, RE36,947, D341,131, D406,117, D416,550, D417,864, D419,185, D426,206, D439,851, D444,793.

Trademarks

The APPS logo, AutoCal, Auto-Count, Balance, Best, the Best logo, BESTColor, BioVu, BioWare, ColorPASS, Colorproof, ColorWise, Command WorkStation, CopyNet, Cretachrom, Cretaprint, the Cretaprint logo, Cretaprinter, Cretaroller, DockNet, Digital StoreFront, DocBuilder, DocBuilder Pro, DocStream, DSFdesign Studio, Dynamic Wedge, EDOX, EFI, the EFI logo, Electronics For Imaging, Entrac, EPCount, EPPhoto, EPRegister, EPStatus, Estimate, ExpressPay, Fabrivu, Fast-4, Fiery, the Fiery logo, Fiery Driven, the Fiery Driven logo, Fiery JobFlow, Fiery JobMaster, Fiery Link, Fiery Prints, the Fiery Prints logo, Fiery Spark, FreeForm, Hagen, Inktenity, Inkware, Jetrion, the Jetrion logo, LapNet, Logic, MiniNet, Monarch, MicroPress, OneFlow, Pace, PhotoXposure, PressVu, Printcafe, PrinterSite, PrintFlow, PrintMe, the PrintMe logo, PrintSmith, PrintSmith Site, Printstream, Print to Win, Prograph, PSI, PSI Flexo, Radius, Rastek, the Rastek logo, Remoteproof, RIPChips, RIP-While-Print, Screenproof, SendMe, Sincolor, Splash, Spot-On, TrackNet, UltraPress, UltraTex, UltraVu, UV Series 50, VisualCal, VUTEk, the VUTEk logo, and WebTools are trademarks of Electronics For Imaging, Inc. and/or its wholly owned subsidiaries in the U.S. and/or certain other countries.

All other terms and product names may be trademarks or registered trademarks of their respective owners and are hereby acknowledged.



Table of Contents

Introduction 4

 Overview 4

 Contact Information 4

Delete Job Overview 5

Delete Quotes and Jobs 5

New programming to allow for deleting of Master Templates 7

 Key Points 7

 Workflow..... 7

Introduction

Overview

This document provides user instructions for the EFI PrintStream Delete Job.


Contact Information

EFI Support

US Phone:	855.334.4457 (first select option 3, then press option 8, then press option 1)
US Fax:	415.233.4157
US E-mail:	printstream.support@efi.com
Regular Service Desk hours are 8:00 AM to 7:00 PM Central Time, Monday – Friday. Outside of these hours, you may leave a voice mail message and an on-call support representative will be paged. Response time is based on the severity of the issue.	
Note	For problems involving infrastructure (i.e., computers, networks, operating systems, backup software, printers, third-party software, etc.), contact the appropriate vendor. EFI cannot support these types of issues.

EFI Professional Services

US Phone:	651.365.5321
US Fax:	651.365.5334
E-Mail:	ProfessionalServicesOperations@efi.com
EFI Professional Services can help you perform EFI software installations, upgrades, and updates. This group can also help you implement, customize, and optimize your EFI software plus offer a range of training options.	



Delete Job Overview

The EFI PrintStream Delete Job program allows you to delete jobs and quotes.

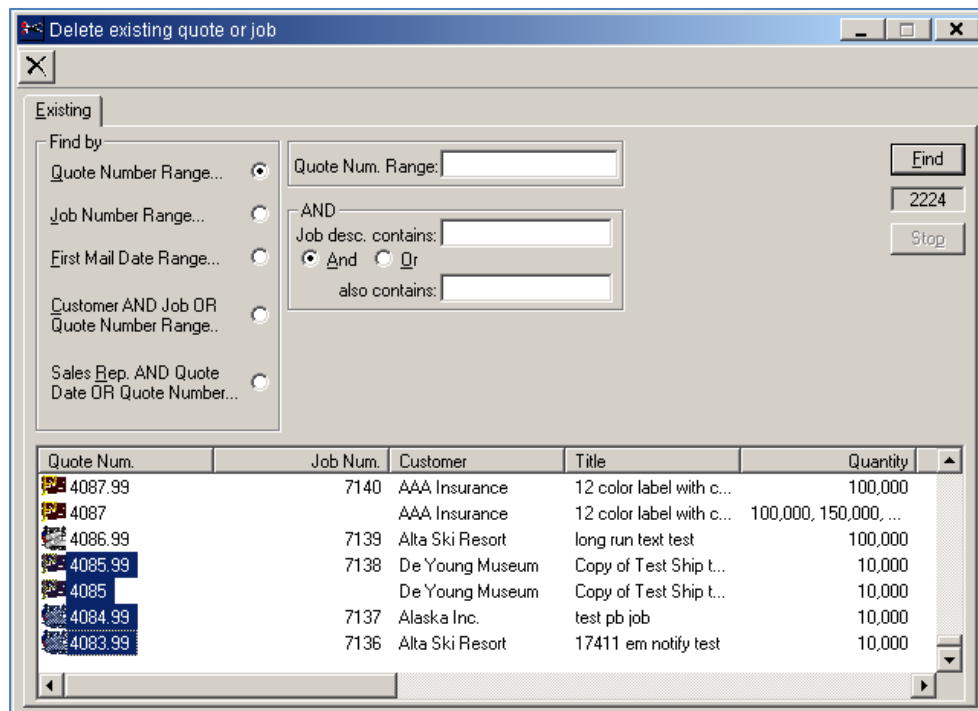


Delete Quotes and Jobs

This program allows you to block a series of quotes by either holding down the <Control> key and clicking on the quotes to delete or clicking on the first quote while holding down the <Shift> key and then clicking on the last quote which will highlight the series. When you click on the delete button it will remove them all.

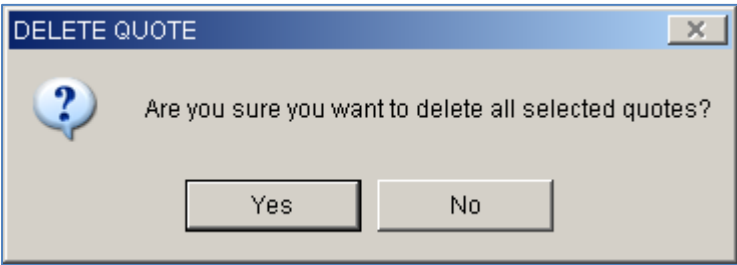
To delete a quote or job

1. Open Delete existing job or quote window.
2. Select a **Find By** filter criteria. Click **Find**.
3. From the list on the bottom select a quote or job. Use the <Control> key to select multiple quotes or jobs. Using the <Shift> key will select a series.



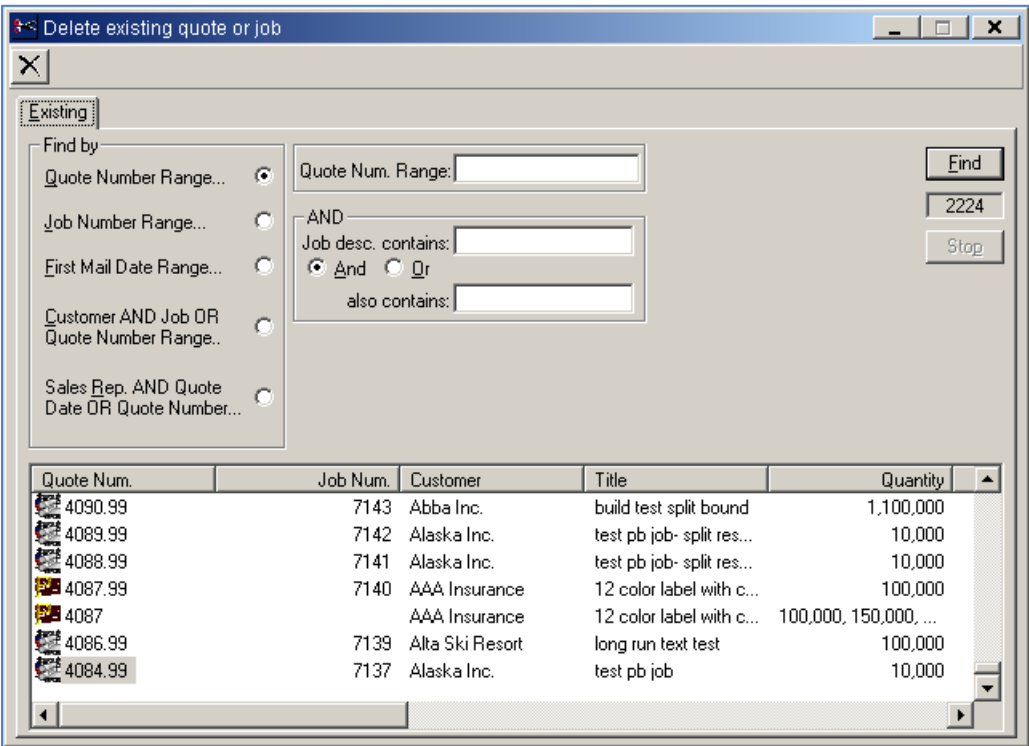
4. Click the delete button.

- 5. Click **Yes** to delete.



Note You will not be allowed to delete jobs which have been invoiced and/or have job transactions.

- 6. The items you selected will now be deleted.



New programming to allow for deleting of Master Templates

Key Points

- The user needs to be able to delete Master Templates ONLY if Master Templates have not been used for Job Creation
- The user needs to receive warning to prevent from deleting Master Quote in case Jobs were created based on this template
- Even if Master Template has not been used to create ANY jobs yet – it would be safe to allow to delete Master Template just after submitting PASSWORD as Creating Template is time consuming and losing newly created Templates which were NOT used but created to be used in a future should be protected at least with password use
- In order to provide quick turn around and easy delivery – Delete Master Template functionality should be implemented via the Delete Job Module which does not involve complicated compilation with less dependencies

Workflow

1. User will enter the Quote Number to Delete

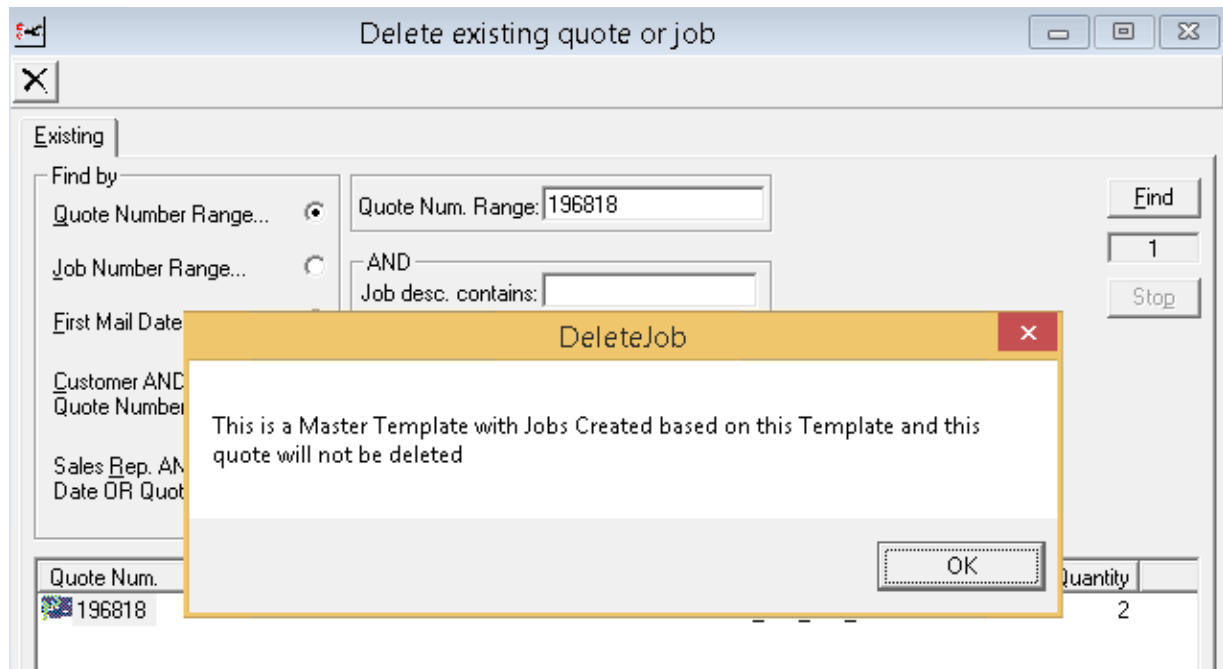
The screenshot shows a software window titled "Delete existing quote or job". Inside, there's a section labeled "Existing" with search options. The "Quote Number Range..." option is selected, and the value "196818" is entered in the "Quote Num. Range:" field. Below this, there's an "AND" section with "Job desc. contains:" and "also contains:" fields, both of which are empty. To the right of these fields are "Find" and "Stop" buttons. At the bottom of the window is a table with columns: "Quote Num.", "Job Num.", "Customer", and "Quantity". The first row contains the values "196818", "SUPERIC", and "2". Overlaid on top of the bottom half of the window is a smaller dialog box titled "DELETE QUOTE". It contains a question mark icon and the text "Delete quote 196818 - ?". At the bottom of the dialog are "Yes" and "No" buttons.

Quote Num.	Job Num.	Customer	Quantity
196818		SUPERIC	2



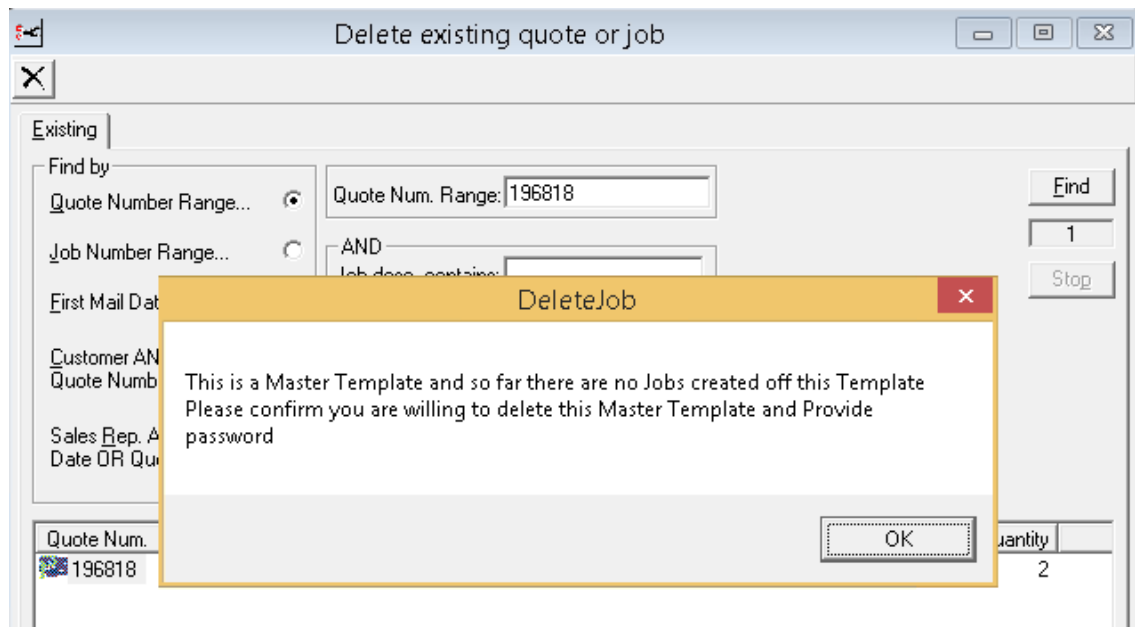
2. User confirm Yes to Delete Quote

After Quote is identified as a Master Quote

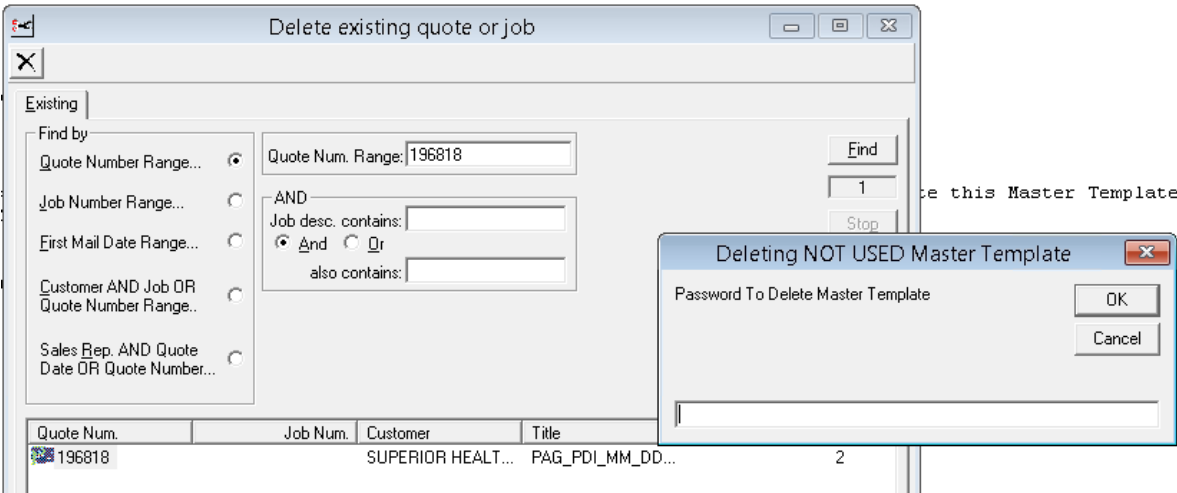


3. If Quote will be identified as a Master Template WITHOUT any Jobs created based on this Quote:

First status of the quote is going to be confirmed



4. And Input Box for the Password will be offered



5. If user not providing correct password

