

User Guide

Ink Templates  
V21.1.0200

**Copyright** © 2021 by Electronics for Imaging, Inc. All Rights Reserved.

EFI PrintStream | V21.1.0200 Ink Templates User Guide

This publication is protected by copyright, and all rights are reserved. No part of it may be reproduced or transmitted in any form or by any means for any purpose without express prior written consent from Electronics for Imaging, Inc. Information in this document is subject to change without notice and does not represent a commitment on the part of Electronics for Imaging, Inc.

## Patents

This product may be covered by one or more of the following U.S. Patents: 4,716,978, 4,828,056, 4,917,488, 4,941,038, 5,109,241, 5,170,182, 5,212,546, 5,260,878, 5,276,490, 5,278,599, 5,335,040, 5,343,311, 5,398,107, 5,424,754, 5,442,429, 5,459,560, 5,467,446, 5,506,946, 5,517,334, 5,537,516, 5,543,940, 5,553,200, 5,563,689, 5,565,960, 5,583,623, 5,596,416, 5,615,314, 5,619,624, 5,625,712, 5,640,228, 5,666,436, 5,745,657, 5,760,913, 5,799,232, 5,818,645, 5,835,788, 5,859,711, 5,867,179, 5,940,186, 5,959,867, 5,970,174, 5,982,937, 5,995,724, 6,002,795, 6,025,922, 6,035,103, 6,041,200, 6,065,041, 6,112,665, 6,116,707, 6,122,407, 6,134,018, 6,141,120, 6,166,821, 6,173,286, 6,185,335, 6,201,614, 6,215,562, 6,219,155, 6,219,659, 6,222,641, 6,224,048, 6,225,974, 6,226,419, 6,238,105, 6,239,895, 6,256,108, 6,269,190, 6,271,937, 6,278,901, 6,279,009, 6,289,122, 6,292,270, 6,299,063, 6,310,697, 6,321,133, 6,327,047, 6,327,050, 6,327,052, 6,330,071, 6,330,363, 6,331,899, 6,340,975, 6,341,017, 6,341,018, 6,341,307, 6,347,256, 6,348,978, 6,356,359, 6,366,918, 6,369,895, 6,381,036, 6,400,443, 6,429,949, 6,449,393, 6,476,927, 6,490,696, 6,501,565, 6,519,053, 6,539,323, 6,543,871, 6,546,364, 6,549,294, 6,549,300, 6,550,991, 6,552,815, 6,559,958, 6,572,293, 6,590,676, 6,606,165, 6,633,396, 6,636,326, 6,643,317, 6,647,149, 6,657,741, 6,662,199, 6,678,068, 6,707,563, 6,741,262, 6,748,471, 6,753,845, 6,757,436, 6,757,440, 6,778,700, 6,781,596, 6,816,276, 6,825,943, 6,832,865, 6,836,342, RE33,973, RE36,947, D341,131, D406,117, D416,550, D417,864, D419,185, D426,206, D439,851, D444,793.

## Trademarks

The APPS logo, AutoCal, Auto-Count, Balance, Best, the Best logo, BESTColor, BioVu, BioWare, ColorPASS, Colorproof, ColorWise, Command WorkStation, CopyNet, Cretachrom, Cretaprint, the Cretaprint logo, Cretaprinter, Cretaroller, DockNet, Digital StoreFront, DocBuilder, DocBuilder Pro, DocStream, DSFdesign Studio, Dynamic Wedge, EDOX, EFI, the EFI logo, Electronics For Imaging, Entrac, EPCount, EPPhoto, EPRegister, EPStatus, Estimate, ExpressPay, Fabrivu, Fast-4, Fiery, the Fiery logo, Fiery Driven, the Fiery Driven logo, Fiery JobFlow, Fiery JobMaster, Fiery Link, Fiery Prints, the Fiery Prints logo, Fiery Spark, FreeForm, Hagen, Inktenity, Inkware, Jetrion, the Jetrion logo, LapNet, Logic, MiniNet, Monarch, MicroPress, OneFlow, Pace, PhotoXposure, PressVu, Printcafe, PrinterSite, PrintFlow, PrintMe, the PrintMe logo, PrintSmith, PrintSmith Site, Printstream, Print to Win, Prograph, PSI, PSI Flexo, Radius, Rastek, the Rastek logo, Remoteproof, RIPChips, RIP-While-Print, Screenproof, SendMe, Sincolor, Splash, Spot-On, TrackNet, UltraPress, UltraTex, UltraVu, UV Series 50, VisualCal, VUTEk, the VUTEk logo, and WebTools are trademarks of Electronics For Imaging, Inc. and/or its wholly owned subsidiaries in the U.S. and/or certain other countries.

All other terms and product names may be trademarks or registered trademarks of their respective owners and are hereby acknowledged.



**Table of Contents**

**Introduction ..... 4**

**Overview ..... 4**

**Contact Information ..... 4**

**Setting up for Print and Mail Estimating ..... 5**

# Introduction

## Overview

This document provides user instruction for Ink Templates in PrintStream.


## Contact Information

### EFI Support

|   |  |
|---|--|
| <b>US Phone:</b>  | 855.334.4457 (first select option 3, then press option 8, then press option 1)   |
| <b>US Fax:</b>  | 415.233.4157   |
| <b>US E-mail:</b>   | <a href="mailto:printstream.support@efi.com">printstream.support@efi.com</a>   |
| Regular Service Desk hours are 8:00 AM to 7:00 PM Central Time, Monday – Friday. Outside of these hours, you may leave a voice mail message and an on-call support representative will be paged. Response time is based on the severity of the issue. |  |
| <b>Note</b>   | For problems involving infrastructure (i.e., computers, networks, operating systems, backup software, printers, third-party software, etc.), contact the appropriate vendor. EFI cannot support these types of issues. |

### EFI Professional Services

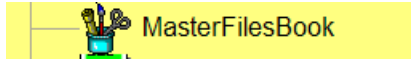
|   |  |
|---|--|
| <b>US Phone:</b>  | 651.365.5321   |
| <b>US Fax:</b>  | 651.365.5334   |
| <b>E-Mail:</b>  | <a href="mailto:ProfessionalServicesOperations@efi.com">ProfessionalServicesOperations@efi.com</a> |
| EFI Professional Services can help you perform EFI software installations, upgrades, and updates. This group can also help you implement, customize, and optimize your EFI software plus offer a range of training options. |  |



## Setting up for Print and Mail Estimating

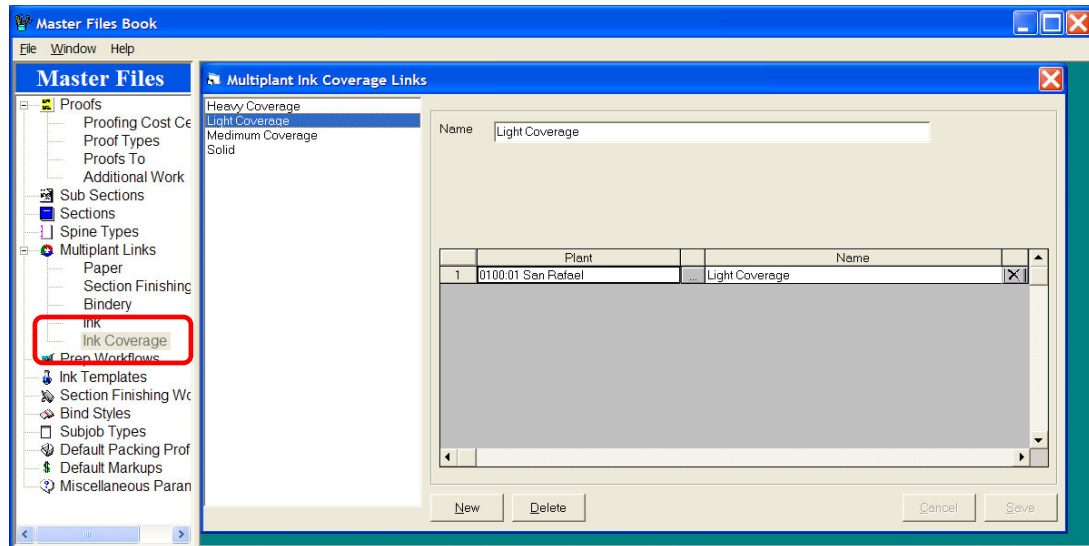
Configure Ink Templates by setting up links to **Inks** and **Ink Coverages** from Master Files Print.

Select the Master Files Book.

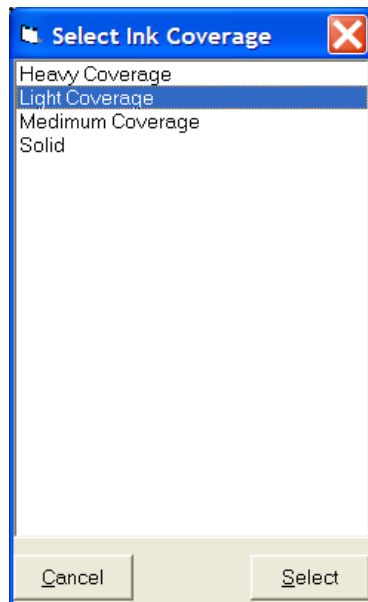


### Configuring Ink Coverage

1. For Ink Coverage, select **Ink Coverage** from the menu tree.



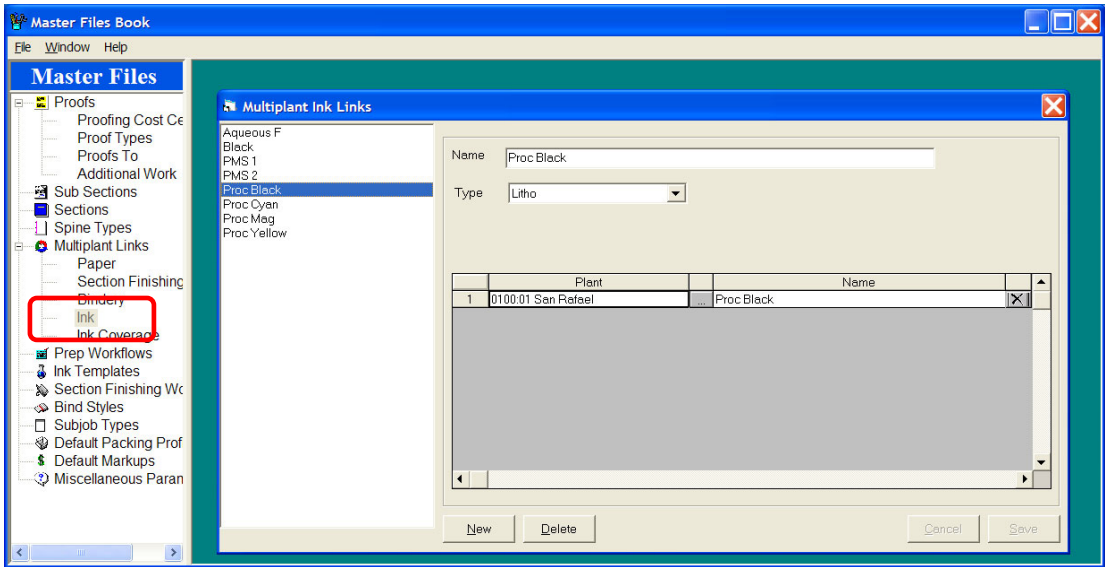
2. Select **New** and choose a **Plant**. Select the "...". **Select Ink Coverage** displays.



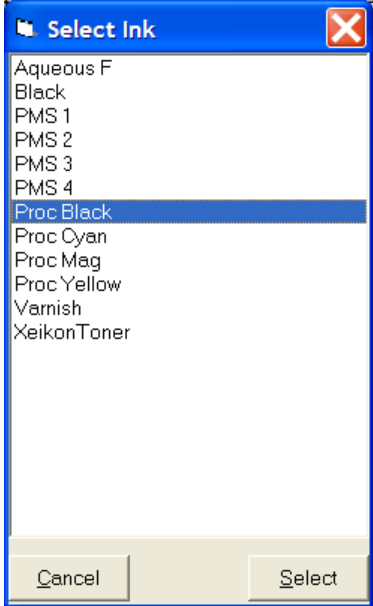
3. Select **Ink Coverage** from the list Click **Select** and then **Save**.

Configuring Ink

- 1. Select Ink from the menu tree.



- 2. Select **New** and choose a **Plant**. Select the “...” box. **Select Ink Box** displays.

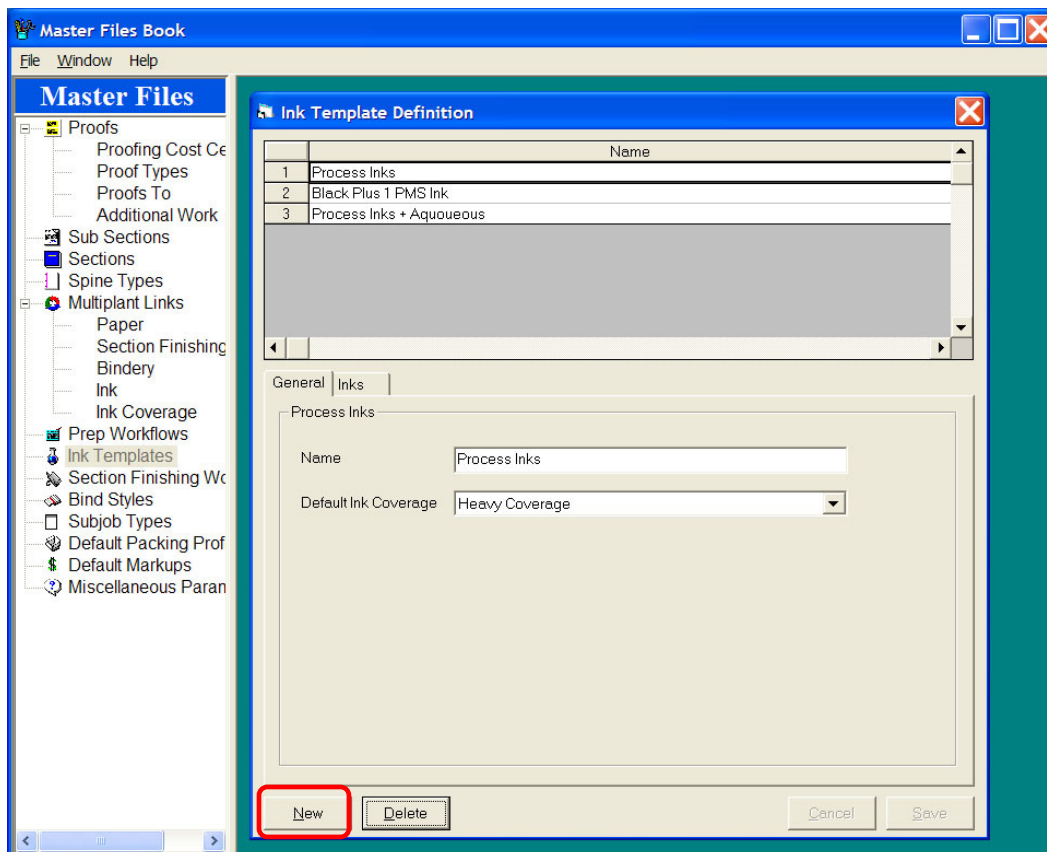


- 3. Select **Ink** from the list. Click **Select** and **Save**.

## Configuring Ink Templates

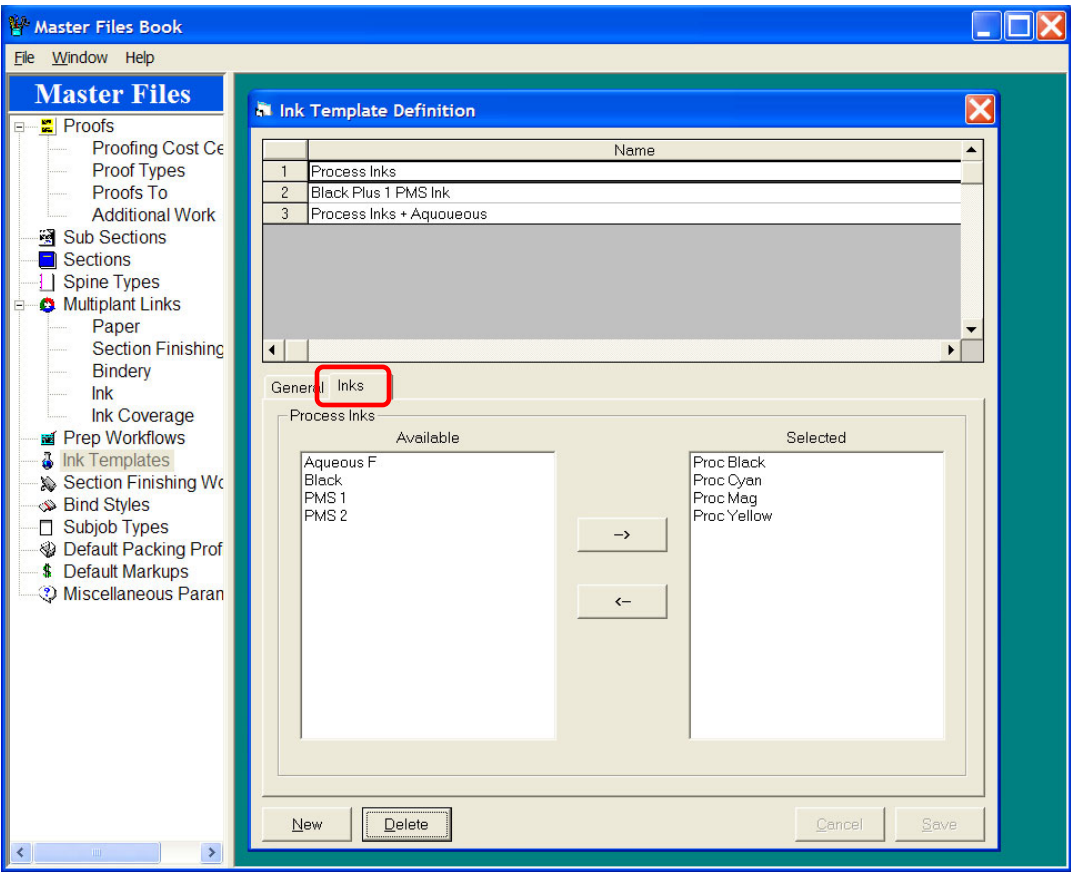
Configure **Ink Templates** by linking individual Inks to an Ink Template. For example, in a job with 4-color process, in Estimating, only one entry would be necessary rather than 4 entries (cyan, yellow, magenta, black).

1. Select **Ink Template** from the menu tree.
2. In the General tab click **New**.



3. **Name** – Enter a name for the Ink Template.
4. **Default Ink Coverage** – Select a Default Ink Coverage from the dropdown list and select **Save**.

5. Select the **Inks** tab.



6. Highlight the inks to be included in the Ink Template by highlighting and clicking the right arrow. To deselect, highlight and click the left arrow. Select **Save**.

The Ink Template now displays as an option in Print and Mail Estimating in the **Inks** tab.

