



## User Guide

Printing App and Printing Profiles  
V21.1.0200

**Copyright** © 2021 by Electronics for Imaging, Inc. All Rights Reserved.

EFI PrintStream | V21.1.0200 *Printing App and Printing Profiles User Guide*

This publication is protected by copyright, and all rights are reserved. No part of it may be reproduced or transmitted in any form or by any means for any purpose without express prior written consent from Electronics for Imaging, Inc. Information in this document is subject to change without notice and does not represent a commitment on the part of Electronics for Imaging, Inc.

## Patents

This product may be covered by one or more of the following U.S. Patents: 4,716,978, 4,828,056, 4,917,488, 4,941,038, 5,109,241, 5,170,182, 5,212,546, 5,260,878, 5,276,490, 5,278,599, 5,335,040, 5,343,311, 5,398,107, 5,424,754, 5,442,429, 5,459,560, 5,467,446, 5,506,946, 5,517,334, 5,537,516, 5,543,940, 5,553,200, 5,563,689, 5,565,960, 5,583,623, 5,596,416, 5,615,314, 5,619,624, 5,625,712, 5,640,228, 5,666,436, 5,745,657, 5,760,913, 5,799,232, 5,818,645, 5,835,788, 5,859,711, 5,867,179, 5,940,186, 5,959,867, 5,970,174, 5,982,937, 5,995,724, 6,002,795, 6,025,922, 6,035,103, 6,041,200, 6,065,041, 6,112,665, 6,116,707, 6,122,407, 6,134,018, 6,141,120, 6,166,821, 6,173,286, 6,185,335, 6,201,614, 6,215,562, 6,219,155, 6,219,659, 6,222,641, 6,224,048, 6,225,974, 6,226,419, 6,238,105, 6,239,895, 6,256,108, 6,269,190, 6,271,937, 6,278,901, 6,279,009, 6,289,122, 6,292,270, 6,299,063, 6,310,697, 6,321,133, 6,327,047, 6,327,050, 6,327,052, 6,330,071, 6,330,363, 6,331,899, 6,340,975, 6,341,017, 6,341,018, 6,341,307, 6,347,256, 6,348,978, 6,356,359, 6,366,918, 6,369,895, 6,381,036, 6,400,443, 6,429,949, 6,449,393, 6,476,927, 6,490,696, 6,501,565, 6,519,053, 6,539,323, 6,543,871, 6,546,364, 6,549,294, 6,549,300, 6,550,991, 6,552,815, 6,559,958, 6,572,293, 6,590,676, 6,606,165, 6,633,396, 6,636,326, 6,643,317, 6,647,149, 6,657,741, 6,662,199, 6,678,068, 6,707,563, 6,741,262, 6,748,471, 6,753,845, 6,757,436, 6,757,440, 6,778,700, 6,781,596, 6,816,276, 6,825,943, 6,832,865, 6,836,342, RE33,973, RE36,947, D341,131, D406,117, D416,550, D417,864, D419,185, D426,206, D439,851, D444,793.

## Trademarks

The APPS logo, AutoCal, Auto-Count, Balance, Best, the Best logo, BESTColor, BioVu, BioWare, ColorPASS, Colorproof, ColorWise, Command WorkStation, CopyNet, Cretachrom, Cretaprint, the Cretaprint logo, Cretaprinter, Cretaroller, DockNet, Digital StoreFront, DocBuilder, DocBuilder Pro, DocStream, DSFdesign Studio, Dynamic Wedge, EDOX, EFI, the EFI logo, Electronics For Imaging, Entrac, EPCount, EPPhoto, EPRegister, EPStatus, Estimate, ExpressPay, Fabrivu, Fast-4, Fiery, the Fiery logo, Fiery Driven, the Fiery Driven logo, Fiery JobFlow, Fiery JobMaster, Fiery Link, Fiery Prints, the Fiery Prints logo, Fiery Spark, FreeForm, Hagen, Inkensity, Inkware, Jetrion, the Jetrion logo, LapNet, Logic, MiniNet, Monarch, MicroPress, OneFlow, Pace, PhotoXposure, PressVu, Printcafe, PrinterSite, PrintFlow, PrintMe, the PrintMe logo, PrintSmith, PrintSmith Site, Printstream, Print to Win, Prograph, PSI, PSI Flexo, Radius, Rastek, the Rastek logo, Remoteproof, RIPChips, RIP-While-Print, Screenproof, SendMe, Sincolor, Splash, Spot-On, TrackNet, UltraPress, UltraTex, UltraVu, UV Series 50, VisualCal, VUTEk, the VUTEk logo, and WebTools are trademarks of Electronics For Imaging, Inc. and/or its wholly owned subsidiaries in the U.S. and/or certain other countries.

All other terms and product names may be trademarks or registered trademarks of their respective owners and are hereby acknowledged.



Table of Contents

**Introduction ..... 4**

    Overview ..... 4

    Contact Information ..... 4

**EFI WW Printing App ..... 5**

    Print App Options ..... 6

    Verify Mapped Printers ..... 6

        Project Printers..... 6

        Workstation Printers..... 7

        Print Queue ..... 7

        Print Queue Errors ..... 7

        Installed Printers ..... 8

    EFI WW Printing App from EFI PrintStream Service..... 9

**Printing Profiles..... 10**

    Setup Printing Profiles ..... 10

        Printers ..... 10

        Reports..... 10

        Printing Profiles ..... 11



# Introduction

## Overview

This document provides information about the Wireless Warehouse in PrintStream.

## Contact Information

### EFI Support

<b>US Phone:</b>	855.334.4457 (first select option 3, then press option 8, then press option 1)
<b>US Fax:</b>	415.233.4157
<b>US E-mail:</b>	<a href="mailto:printstream.support@efi.com">printstream.support@efi.com</a>
Regular Service Desk hours are 8:00 AM to 7:00 PM Central Time, Monday – Friday. Outside of these hours, you may leave a voice mail message and an on-call support representative will be paged. Response time is based on the severity of the issue.	
<b>Note</b>	For problems involving infrastructure (i.e., computers, networks, operating systems, backup software, printers, third-party software, etc.), contact the appropriate vendor. EFI cannot support these types of issues.

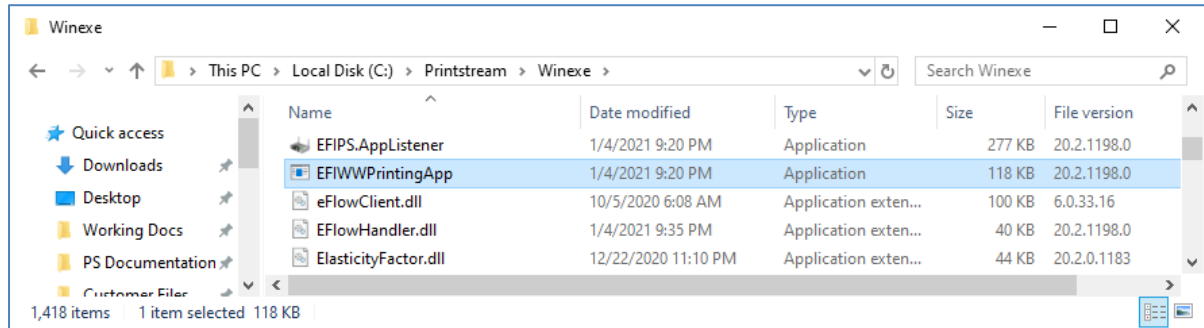
### EFI Professional Services

<b>US Phone:</b>	651.365.5321
<b>US Fax:</b>	651.365.5334
<b>E-Mail:</b>	<a href="mailto:ProfessionalServicesOperations@efi.com">ProfessionalServicesOperations@efi.com</a>
EFI Professional Services can help you perform EFI software installations, upgrades, and updates. This group can also help you implement, customize, and optimize your EFI software plus offer a range of training options.	



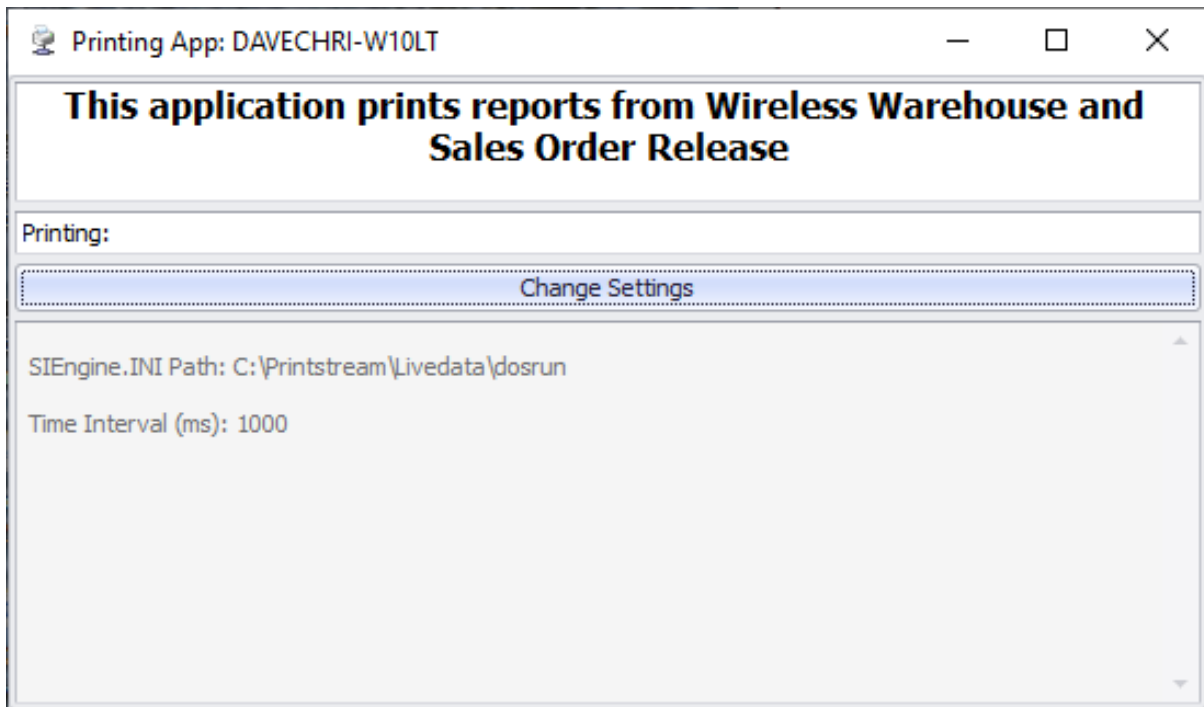
## EFI WW Printing App

The EFI WW Printing App is located in the Winexe folder of your PrintStream directory. You can create a shortcut and run it as an Administrator on the desktop of the server.



Changes were made to allow multiple instances of the Printing Application to be running on different machines in parallel with one another. If one partition goes down, the others will continue to run and print the documents. This allows the printing of the documenting to print faster to different printers if needed.

For the Printing Application, a few additions have been added for the user. These can be found under the "Change Settings".



## Print App Options

- Set the Path to the PrintStream database dosrun folder.
- Set Timer in ms.
- Set Print to Printer to always print directly to a printer.
- Set Print to PDF if you want to send Fulfillment Release Tickets as a PDF to a folder.

Print App Options

Select Options

SIEngine.INI PathC:\Printstream\Livedata\dosrun

Set Timer in ms1000

☒ Print To Printer

☐ Print To PDFPDFs FolderC:\Users\davechri\Documents\Downloads

OK

Verify Mapped Printers

Cancel

## Verify Mapped Printers

This screen has 5 tabs, Project Printers, Workstation Printers, Print Queue, Print Queue Errors & Installed Printers.

**Project Printers** - lists the customer, projects, and tickets linked to the project and the project's default printer.

Validate Printers at DAVECHRI-W10LT

Refresh

Project Printers

Workstation Printers

Print Queue

Print Queue Errors

Installed Printers

Project Printers

Drag a column header here to group by that column

Customer Name	Project Name	Pick Slip	Stock Pull Report	Package Label	Printer Name
Alaska Inc.	Pick & Pack			PackageLabels	Workstation default printer
Alaska Inc.	Test 5/29/12			PackageLabels	Workstation default printer
Alaska Inc.	Test 9/27/12			PackageLabels	Workstation default printer
Alaska Inc.	Test Project 1	PickTicket with Shading	FFStkPullLocSkidsDet	Walsworth PL3	HP LaserJet Pro MFP M225-M226 PCL 6

**Workstation Printers** - lists the workstations that are setup for shop floor, the profile name linked to it, the report, the printer description and the printer linked to it. This would be setup in Report Printing Profiles module.

Validate Printers at DAVECHRI-W10LT

Refresh

Project Printers

**Workstation Printers**

Print Queue

Print Queue Errors

Installed Printers

Printers set for Workstation

Drag a column header here to group by that column

Workstation	Profile Name	Report Name	Printer Description	Printer Name
print	Print - Skid Ticket	SkidTicket	LASER	HP LaserJet Pro MFP M225-M226 PCL 6
mail	Mail - Pick Slip	PickSlip	LASER	HP LaserJet Pro MFP M225-M226 PCL 6
mail	Mail - Pack Slip	PackSlip	LASER	HP LaserJet Pro MFP M225-M226 PCL 6

**Print Queue** - shows what reports are waiting to get picked up for printing.

Validate Printers at DAVECHRI-W10LT

Refresh

Project Printers
Workstation Printers
**Print Queue**
Print Queue Errors
Installed Printers

Print Queue

Drag a column header here to group by that column

Work Station Name	Report Type	Batch ID	Pick ID	Project Name	Receipt No	Package ID	From Audit Trail ID	From Skid IDs	Created By	Created Date
mail	PrintPackageSlip	990	17320	Test Project 1		781			LS	6/5/2019
mail	PrintPackageSlip	990	17320	Test Project 1		781			LS	6/5/2019

**Print Queue Errors** - shows any errors for documents that could not be printed, for an example, an improper document format was requested to be printed but it is not linked to the FF project.

Validate Printers at DAVECHRI-W10LT

Refresh

Project Printers

Workstation Printers

Print Queue

**Print Queue Errors**

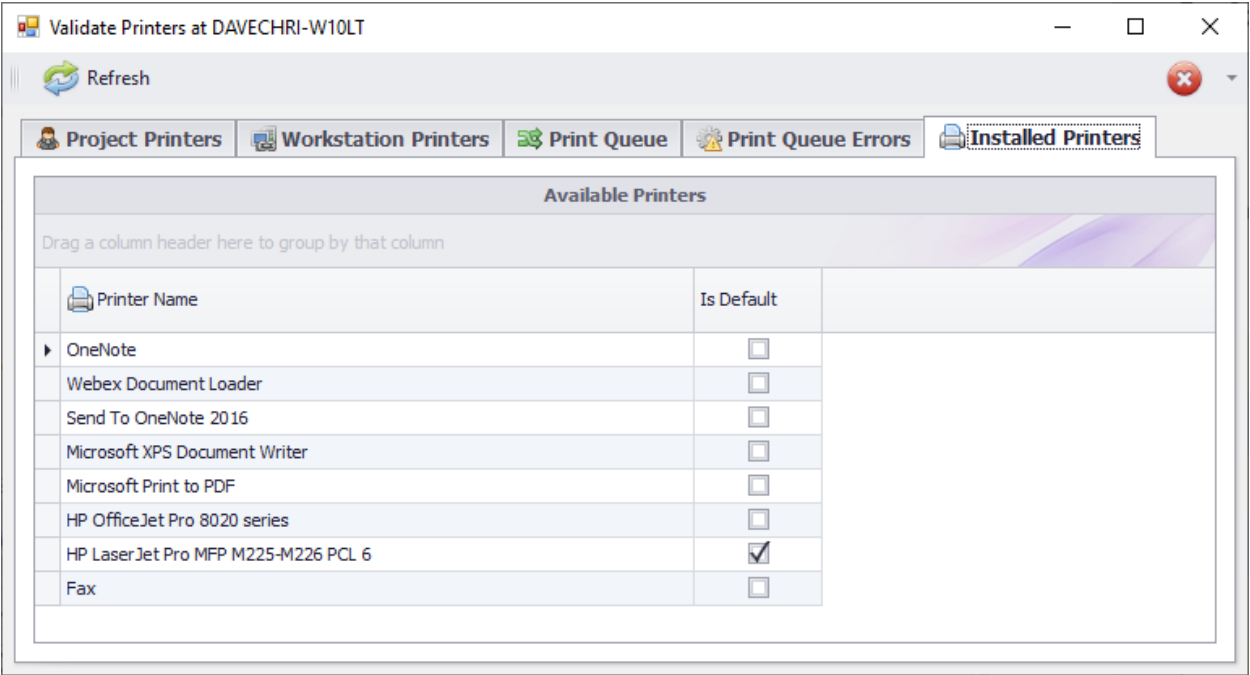
Installed Printers

Print Queue Errors (Top 50)

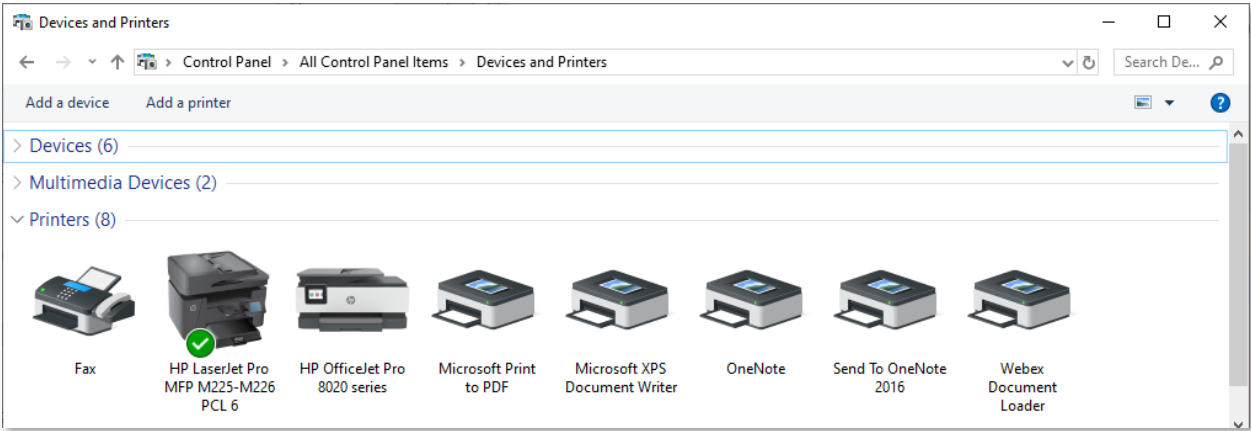
Drag a column header here to group by that column

Work Station Name	Project Name	Batch ID	Pick ID	Receipt No	Package ID	Print Type	From Audit Trail ID	From Skid IDs	Status Message

**Installed Printers** - shows the printer/s installed on the workstation and its default.



These are the same printers displayed at the system level in Devices and Printers.



Two things that are most critical when using the printing app:

1. All printers that are going to be used on the printing app need to be installed on the server. The account they are installed with needs to be a domain admin account that does not expire. We normally recommend that the account be a generic account.
2. The printing app needs to be running on the same domain admin account that the printers were installed on. You login to the server with this account and start the printing app and you don't logoff this account you disconnect so that it is still running.

If you are using the Printing App to Print FF Paperwork you need to have a default printer set on every project and that printer needs to be installed on the server under the account. That is what the Project Printers screen shows you what printer each project is linked to.



## EFI WW Printing App from EFI PrintStream Service

Added a new function to the **EFI Printstream Windows Service Controller** to allow documents that are sent to the "Print Queue" to be sent to the printer without the need for the EFIWWPrintingApp to be running.

Proper setup for workstations, documents and printers will still be needed and can be view within the printing App for verification. The new setting can be found on the "Print Queue Setting" tab.

EFI Printstream Windows Service Controller

EFI Printstream Service is currently: Stopped

Start Service Stop Service Settings... Update Settings

Customer's DOSRUN Database Path: C:\Printstream\Livedata\dosrun

Timer Expires Every (in seconds): 300

Email Address of Person to Notify if error occurs (i.e. admin@printstream.com): mark.lavoie@efi.com

Notification From Email Address: EFIPrintstreamService@ps-qa-50-03.com

Email Address of Person who will receive emails to show service is still running (6am, 12pm, 6pm and 12am):

☐ Turn Trace On?

Email Settings Task Settings PSShipping Settings **Print Queue Settings**

☒ Turn Service On

Set Timer in seconds 10

## Printing Profiles

Printing Profiles can be set up to assign a default printer to a workstation and report type combination.

### Setup Printing Profiles

From the Menu bar under Master Files, select **Report Printing Profiles**.



### Printers

Enter a printer description and select an active printer name using the drop-down arrow. The driver and port pull in automatically. The selected printer must be set as the Default Printer for the server.

 The "Report Printing Profiles" window with the "Printers" tab selected. It shows a "Printer List" table with columns: Description, Printer Name, Driver, and Port.
 

	Description	Printer Name	Driver	Port
1	HP	HP Officejet Pro 8610	winspool	Ne03:
2	INKJET	HP70070F (HP Officejet Pro 8610)	winspool	Ne02:
3	LASER	HP LaserJet Pro MFP M225-M226 PCL 6	winspool	Ne05:
4	PDF	PrimoPDF	winspool	Ne02:
5	XPS	Microsoft XPS Document Writer	winspool	Ne04:
6				
7				
8				
9				
10				

 Buttons: Cancel, Save.

### Reports

Enter the Report Name, Report ID, Report Parameter line descriptions, and Types exactly as in the screen shots below. Select range (N) from the drop-down as below. The password is 3355.

 The "Report Printing Profiles" window with the "Reports" tab selected. It shows a list of report types on the left and a "Report Parameters" table on the right.
 

	Description	Type	Range
1	WorkStation	String	N
2	ReportName	String	N
3	Printer	String	N
4	Copies	Integer	N
5			
6			
7			
8			
9			
10			
11			
12			

 Report Name: Inventory Reports, Report ID: INVREPORTS.
 Buttons: New, Delete, Cancel, Save.

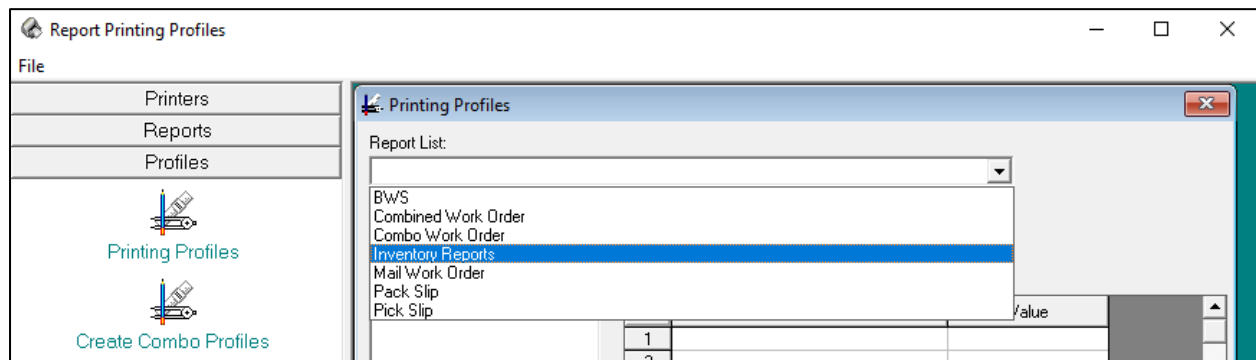
Example: Report Name: **Inventory Reports** and Report ID: **InvReports**

Add the following Report Parameters:

	Description	Type	Range
1	WorkStation	String	N
2	ReportName	String	N
3	Printer	String	N
4	Copies	Integer	N

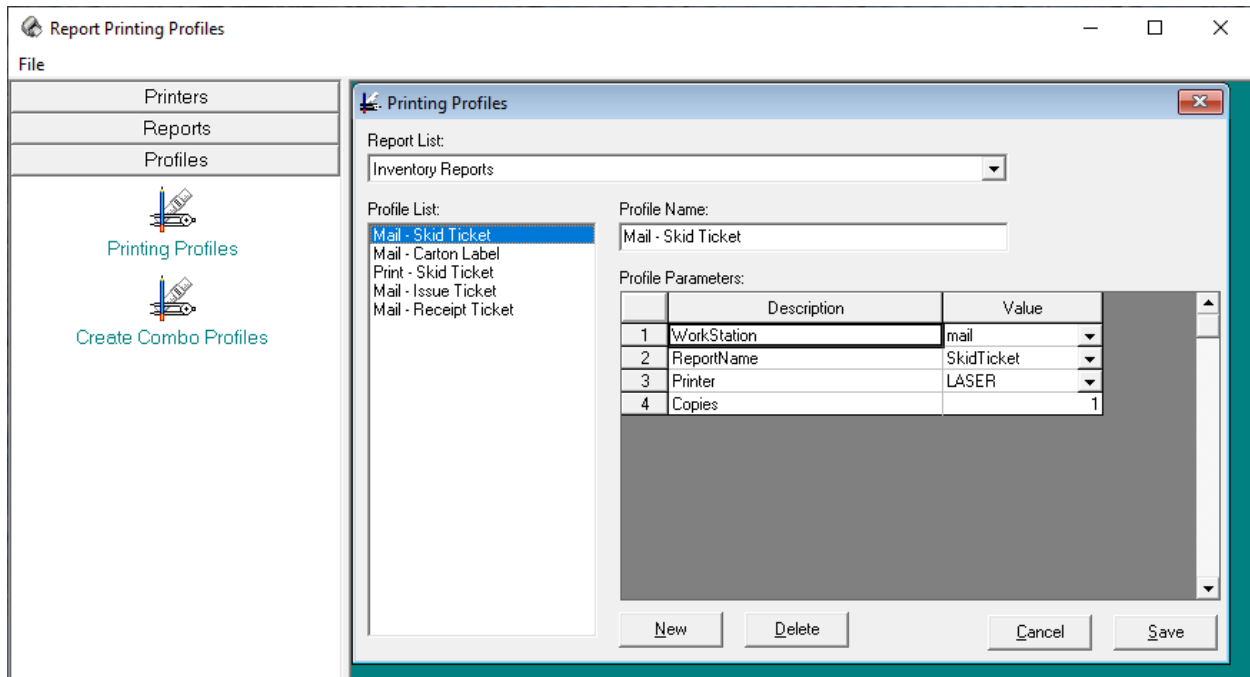
## Printing Profiles

Select the report type you want to create a profile for. In this case, select **Inventory Reports**.



To create a new profile, select the **New** button.

Enter a profile name and select among the **Workstations**, **ReportName**, **Printers** available, and the number of **Copies** it should print.



Note: when creating reports for Packing Slip and Package Labels the report names must match exactly as shown in the examples below.

Report List for Packing Slip

Report Printing Profiles

Printers

Reports

Report List

Profiles

Reports

BWS  
Combined Work Order  
Combo Work Order  
Inventory Reports  
Mail Work Order  
Packing Slip  
Pick Slip  
Package Labels

Report Name:  
Packing Slip

Report ID:  
PackSlip

Report Parameters:

	Description	Type	Range
1	WorkStation	String	N
2	ReportName	String	N
3	Printer	String	N
4	Copies	Integer	N
5			
6			
7			
8			
9			
10			
11			
12			

New

Delete

Cancel

Save

Printing Profiles for Packing Slip

Report Printing Profiles

Printers

Reports

Profiles

Printing Profiles

Create Combo Profiles

File

Printing Profiles

Report List:  
Packing Slip

Profile List:  
Mail - Pack Slip

Profile Name:  
Mail - Pack Slip

Profile Parameters:

	Description	Value
1	WorkStation	mail
2	ReportName	Packing Slip
3	Printer	LASER
4	Copies	1

New

Delete

Cancel

Save

## Report List for Package Labels

Report Printing Profiles

Printers

Reports

Report List

Profiles

Reports

BWS  
Combined Work Order  
Combo Work Order  
Inventory Reports  
Mail Work Order  
Packing Slip  
Pick Slip  
Package Labels

Report Name: Package Labels

Report ID: PkgLabels

Report Parameters:

	Description	Type	Range
1	Workstation	String	N
2	ReportName	String	N
3	Printer	String	N
4	Copies	Integer	N
5			
6			
7			
8			
9			
10			
11			
12			

New Delete Cancel Save

## Printing Profiles for Package Labels

Report Printing Profiles

File

Printers

Reports

Profiles

Printing Profiles

Create Combo Profiles

Printing Profiles

Report List: Package Labels

Profile List: Mail Package Label

Profile Name: Mail Package Label

Profile Parameters:

	Description	Value
1	Workstation	mail
2	ReportName	Package Labels
3	Printer	LASER
4	Copies	1

New Delete Cancel Save